

FOR MORE INFORMATION CONTACT
PROVINCIAL/DISTRICT AGRICULTURE
OFFICE OR CALL NAQIA ON **180 1332**

STOP AFRICAN SWINE FEVER

PRACTICE GOOD
FARM BIOSECURITY



ASF AFFECTS PIGS

- IT DOES NOT CAUSE DISEASE IN HUMANS AND OTHER ANIMALS
- THERE IS NO TREATMENT OR VACCINATION FOR ASF
- WE CAN AVOID ASF THROUGH GOOD FARM BIOSECURITY PRACTICES
- ASF IS NOT CAUSED BY SANGUMA

AUTHORIZED BY: CHIEF STOCK INSPECTOR/CHIEF VETERINARY OFFICER,
NATIONAL AGRICULTURE QUARANTINE & INSPECTION AUTHORITY (NAQIA)

African Swine Fever risk awareness and behaviour change communication material is produced by the National Agriculture Quarantine and Inspection Authority (NAQIA) with support from Australia's Department of Foreign Affairs and Trade (DFAT) and New Zealand's Ministry of Foreign Affairs and Trade (MFAT) through the Pacific Horticultural & Agricultural Market Access Plus Program (PHAMA Plus).





CONFINE PIGS

FROM FREE-RANGING TO FENCING IN AND PENNING YOUR PIGS

- Isolate your healthy pigs in a 'bubble' or compartment from unhealthy environment.
- Pen your pigs and fence the pens in.
- Perimeter fence about 2m (buffer) from the pen.
- Build concrete floors or raised wooden floors.
- Do not allow unauthorised people, animals and vehicles to trespass pig premises.



PRACTICE GOOD HYGIENE

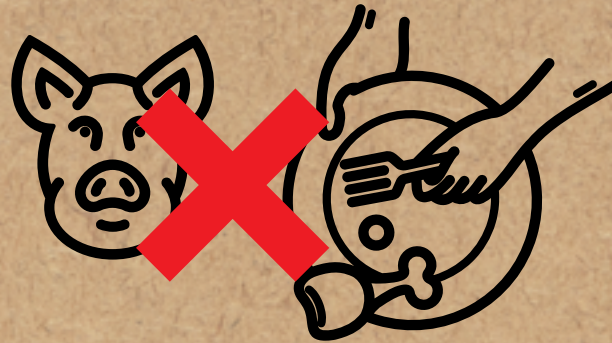
KEEP PIGS AND PIG PENS CLEAN

- Clean out food and animal waste regularly.
- Only allow dedicated people to handle pigs.
- They must use dedicated farm clothes, footwear, equipment, tools, troughs, etc.
- Clean/disinfect before entry and exit of pig pen. Use soap or bleach.
- Pig farmer must not consume cooked pork sold at the local market. This may spread ASF to your pigs.

FEEDING YOUR PIGS

KNOW WHAT YOU ARE FEEDING YOUR PIGS

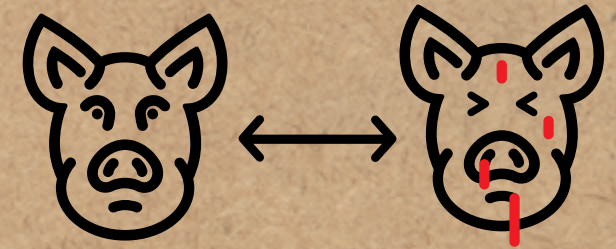
- Do not feed swill (left-over foods) containing pork e.g., from kitchens or mums.
- Use clean feed and water troughs.
- Each pen should have a dedicated feeding and water trough and do not move them from pen to pen.



QUARANTINE NEW PIGS

APPLY BASIC QUARANTINE PROCEDURES WITH NEW PIGS

- Build a separate pen for quarantine purposes at least 10m away from regular pens, and disinfect after using them. Bleach is a readily available disinfectant and works best for hard surfaces like concrete.
- If new pigs should be introduced, quarantine them for 10-14 days in separate quarantine pen. This includes new pigs from different sources, service boars for temporary use, resident pigs returning from sales display or shows.
- During the quarantine period, observe for signs of disease. If no disease after that period, then they can be introduced into your pig pen.



KEEP SICK PIGS SEPARATE

IF PIGS ARE INFECTED WITH ASF, THE SICK PIGS CAN SPREAD ASF VIRUS

- If pigs get sick, immediately isolate them from the rest of the herd.
- Do not slaughter sick pigs for consumption. This spreads the virus.
- Do not buy or sell sick pigs.
- Do not introduce sick pigs to your pens.
- Do not send away your sick pigs to other people or places.
- There is no medical treatment available to cure or prevent ASF.

DISPOSE OF DEAD PIGS PROPERLY

IF PIGS DIED FROM ASF, THE DEAD PIG CARCASSES CAN SPREAD ASF VIRUS

- Do not throw dead pigs in rivers or lakes.
- Do not cut up dead pigs for consumption.
- Do not feed pork from dead pigs to other healthy pigs.
- Bury dead pigs, about 1.5m deep, away from water ways.
- Change and clean clothes used for disposal of carcass.
- Disinfect pens, floors, clothes, tools exposed to the dead pig. Bleach can be used for hard surfaces like concrete and tools.